

### Our PE this Half Term

PE will be on a **Monday** afternoon.  
Please make sure your child comes to school in their PE kit on a Monday every week and have a water bottle with them.

### Our Religious Education this Half Term

This half term will be looking into the concept of 'welcoming'. We will be discussing when we can show ourselves to be welcoming to others and how it affects people's feelings. This will then link into our learning about Palm Sunday and the Easter Story.

### How can you help at home?

**Reading** - Please read at home with your child **at least three times a week**. Reading Books will be checked daily, don't forget to log your reading on the Go Read app and collect those gems!

**Maths** - Counting in 2s, 5s and 10s. Remember to practise your number facts to get your badges.

**History** - Research different dinosaurs, especially those found on the Isle of Wight. Don't forget to bring in any facts you find out!!

## Dates for your Diary

**W/C Monday 14th March 2022 - British Science Week.**

**Tues 15th/Wed 16th March 2022 - Parents' Evenings.**

**Fri 8th April 2022 - Early Closing at 1.00pm.**

**Mon 11th April - Fri 22nd April 2022 - EASTER BREAK.**

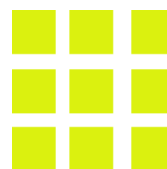
**Thurs 5th May 2022 - Year 1 Marwell Zoo Trip.**

**Fri 27th May 2022 - DEVELOPMENT DAY.**

**Mon 30th May - Fri 3rd June 2022 - HALF TERM.**

**Fri 17th June 2022 - DEVELOPMENT DAY**

**Fri 22nd July 2022 - DEVELOPMENT DAY**



# Nine Acres Primary School

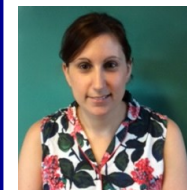
## Spring Term 2 2022

### Year 1 Team

Miss Hollands



Mrs White



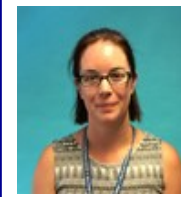
Mr Simpson



Mrs Hewison



Mrs Smith



### Dear Parents & Carers,

We hope you have all had a lovely and relaxing half term. We are pleased to be back and get straight into our new learning.

This term in History we are learning all about Mary Anning who was a palaeontologist in England, she was the first to discover the plesiosaurus right here on the South coast!!

What do you know about dinosaurs? We will be looking at what other famous palaeontologists have found around the world.

What is the funniest dinosaur name you have heard of? Don't forget to share your dinosaur facts with us.

Thank you,  
The Year 1 Team



Knowledge Organiser  
**'Striving for Excellence'**



# Year 1 - Spring Term 2 2022 - Mary Anning

## Important facts to know by the end of this topic:

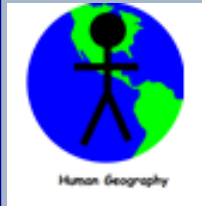
**Dinosaurs** existed millions of years ago and are now extinct. When they became extinct their remains stayed behind as fossils.

**Fossils** form when layers of the earth build up on top of each other and turn into hard rock.

**Mary Anning** was a famous fossil hunter. She is often referred to as one of the first palaeontologists, after discovering a skull of an ichthyosaurus.

A hot spot for fossil hunting on the Isle of Wight is Yaverland. The most common dinosaur to be found was the Iguanodon.

## Key Skills



Using secondary sources to research a significant individual.



To use the language old, new and a long time ago.

To research dinosaurs on the Isle of Wight.

## Key Vocabulary

**Coast** - an area of land that is next to the sea.

**Prehistoric** - the time in history before any information was written down.

**Dinosaur** - large reptiles that lived in prehistoric times.

**Extinct** - no longer living.

**Fossil** - the hard remains of a prehistoric animal or plant.

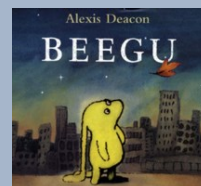
**Palaeontology** - the study of fossils.

**Mary Anning** - a palaeontologist.

## Our English this half term

English this term has started with a bang! A spaceship has arrived on our playground and we need to find out why it is here. We will be using Space themed books to write in a variety of ways such as descriptions, predictions and even poems!

## Exciting Books we will be exploring too!



## Our Mathematics this half term!

We will be using words, pictures and objects to find equal groups (3 groups of 5) to find a total - there are lots of objects around the home that you could practice this with.

Using groups we will then show repeated addition (5+5+5).

